

WOODWIND RANGES

The following pages outline the ranges and particulars of each one of my instruments. This is meant as a guide for composers whom I am working with, note that these ranges only reflect my own playing and the specific instruments that I own.

Table of Contents:

p.1 Chinese Woodwinds

p.2 Irish & Middle East Woodwinds (+Ocarina)

p.3 Baroque Woodwinds

CHINESE WOODWIND RANGES

These notes can be played regularly and easily. No issues.

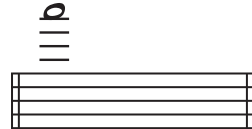


Dizi (Chinese Flute)
in C

These notes are easy to play
but may sound a little airy/out of tune



This note will be loud and slightly
out of tune

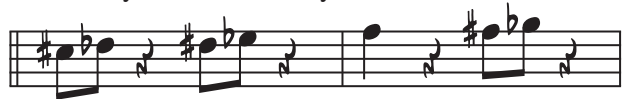


Hulusi
in C

These notes can be played regularly and easily. No issues.

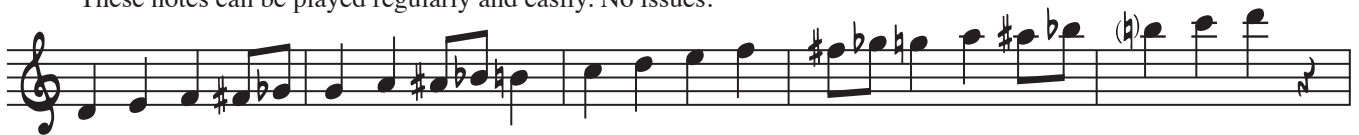


These notes are easy to play
but may sound a little airy/out of tune

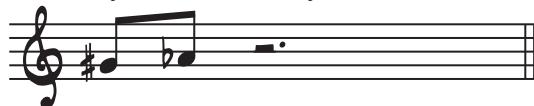


Xiao
in G

These notes can be played regularly and easily. No issues.

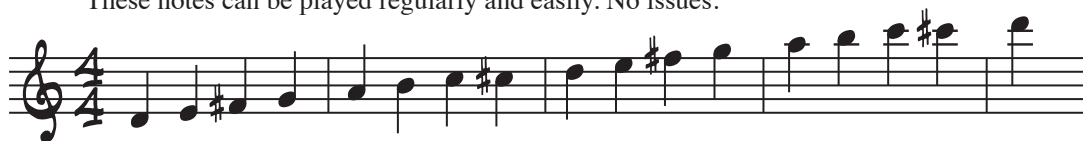


These notes are easy to play
but may sound a little airy/out of tune

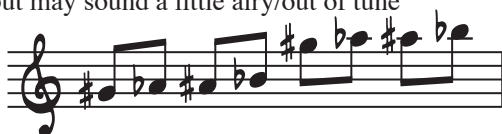


MORE WOODWIND RANGES

These notes can be played regularly and easily. No issues.



These notes are easy to play but may sound a little airy/out of tune



Irish Flute
& Tinwhistle
Tinwhistle sounds 8va

These notes can be played regularly and easily. No issues.



Every chromatic can be played, however they are played with half holes. The player needs time and a consistent key center. Slow tempos work best.



Duduk in F

These notes can be played regularly and easily. No issues.

low notes are very quiet and airy



Turkish Ney



every chromatic
note can be played



Ocarina in C



BAROQUE WOODWIND RANGES

every chromatic
note can be played

low c# and d# are difficult
to finger, slow passages only



Recorders
(written)



baroque oboe is pitched at 415hz.
notes sound approx 1 half step
below written pitch



Baroque Oboe
(Written)

no low C#/Db

